

### Achema 2015 : Safe Connections

Elaflex is exhibiting at Achema and will be presenting innovations in their hose and coupling range.

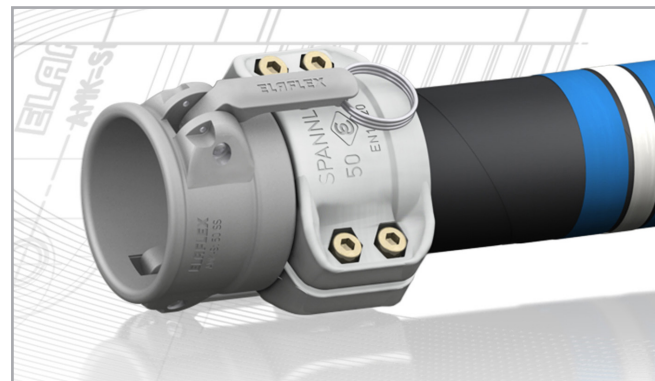
Cam and groove couplings are popular fittings for quick connection of hose assemblies. In recent years, there has been a market trend towards ever worsening qualities. Elaflex is confronting this by presenting a quality product line from their own production. Guaranteed to EN 14420-7 standard, reliable and operationally safe. Samples of these **new cam and groove couplings 'Made by Elaflex'** with ergonomically designed levers will be shown in sizes DN 25, 32 und 50 mm.

Further equipment specialities at the Elaflex Stand:

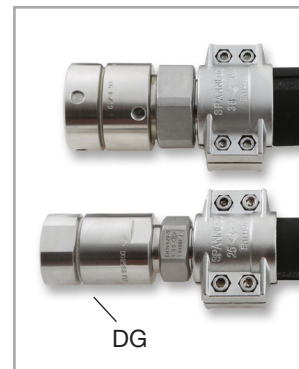
- New generation of **DG swivels** to protect hoses against torsion, PN 25 bar.
- New **TD thread seals** made of reinforced PTFE, showing significantly improved cold flow behaviour.
- **ELAPHARM®** pharmaceutical hose assemblies now available in three different versions and with an expanded coupling range.
- **Online Configurators**, continuously extended. The [hoseconfigurator.elaflex.de](http://hoseconfigurator.elaflex.de) now contains ELAPHARM hose assemblies and new composite hoses types. The configurator for rubber expansion joints [ervconfigurator.elaflex.de](http://ervconfigurator.elaflex.de) now incorporates a series of detail improvements.
- **Crimped couplings** for universal and chemical hoses to EN 12115, an option to our proven re-usable Spannfix and Spannloc safety clamps.
- **Stainless steel hose tails** with an optimized geometry: enhanced operational safety, suitable for temperatures up to 150° C.
- **New brochure** 'ERV Rubber Expansion Joints' for pipework systems.
- **ERV-BR**: new special type rubber expansion joint for abrasive media.
- **Anti-Kinking Spirals 'KSS'** to protect universal and hot steam hoses against permanent bending directly behind the coupling.
- **Dry Cryogenic Couplings** from Mann Tek: Dry Disconnect and breakaway couplings for temperatures down to -196° C.

Elaflex@Achema 2015 -

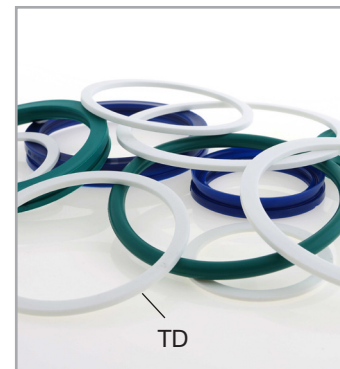
**Exhibition Centre Frankfurt, 15.-19. June 2015, Hall 8.0/L93**



Cam and Groove Couplings to EN 14420-7 'Made by Elaflex'



Swivels DG



Thread Seals TD:  
reduced cold flow



ELAPHARM® - now included in the online [hoseconfigurator.elaflex.de](http://hoseconfigurator.elaflex.de)

ELAFLEX - Gummi Ehlers GmbH  
Marketing Karsten Ehlers  
Tel. +49 40-540 005-0  
E-Mail [info@elaflex.de](mailto:info@elaflex.de)  
Internet [www.elaflex.de](http://www.elaflex.de)