

REFUELLING TECHNOLOGY

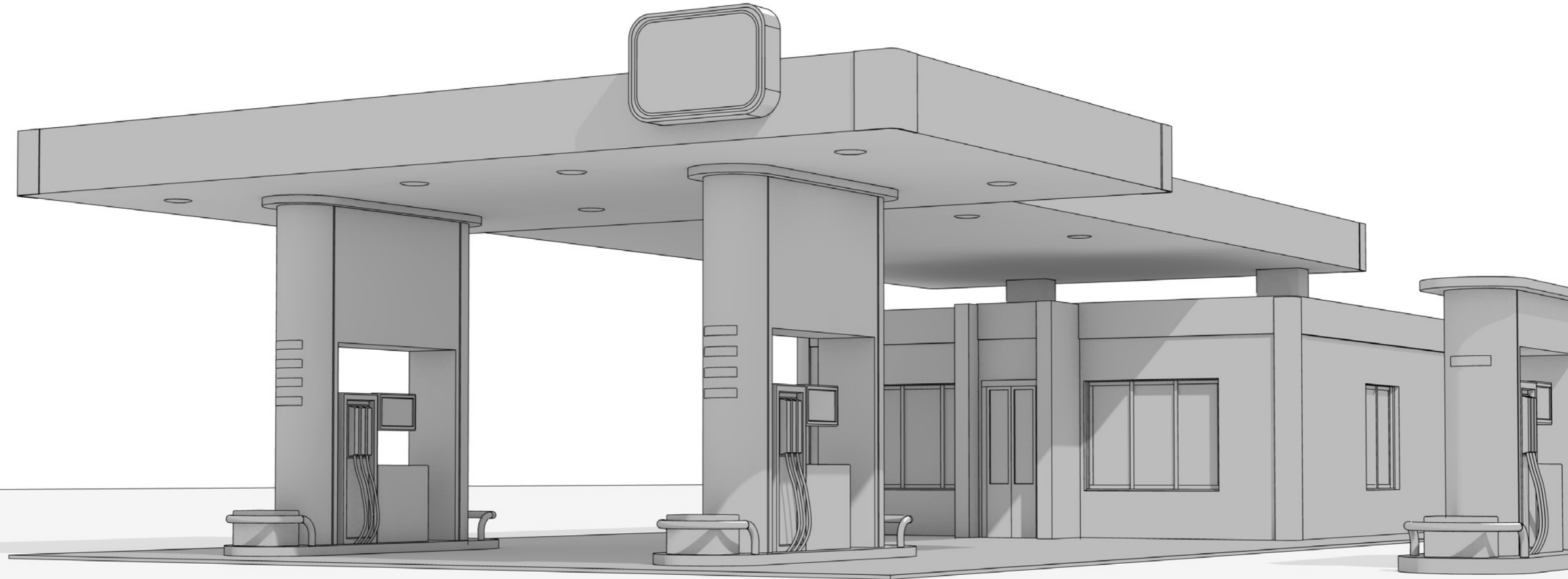
Nozzles · Hoses
Couplings · Accessories



ELAFLEX



REFUELLING WITH ELAFLEX



At a petrol station, a wide variety of expectations, requirements, needs and framework conditions come together every day. Your customers simply want to continue their journey as quickly as possible and reach their destination.

As a petrol station operator, you should therefore be cautious and prioritize making things as easy and safe as possible for your customers, while at the same time keeping a close eye on the cost/benefit ratio. In the core area of refuelling technology, ELAFLEX has been reliably at your side for decades – and is already very familiar with the fuels of the future.

CONTENT

06 Petrol & Diesel	18 N-LNG
08 Tank Truck	20 N-LH2
10 AdBlue®	22 Hose Reels
12 Screen water & H ₂ O	24 Leak Prevention
14 LPG	
16 CNG	

ELAFLEX – BY YOUR SIDE FOR DECADES

Since of more than 100 years ago, we have developed into a recognised specialist in the handling and transporting of hazardous goods and sensitive media.

ELAFLEX sets cross-industry standards and has always played a leading role in the development and establishment of important norms and standards. Virtually everyone in the industry recognises our brand names ZVA and Slimline. The ELAFLEX Group support you around the world. We combine unique selling points such as reliability, maximum safety, user-friendliness and innovation leadership with a consistent focus on service and rapid availability.

The entire ELAFLEX Group bundles its expertise, experience and market-defining inventions around the specific requirements of a wide range of fuels such as petrol, diesel, LPG, LNG, CNG or hydrogen for land, water and air vehicles. Our focus spans from production/extraction to the end user; you benefit from precisely matching expertise from a single source. Join us on the following pages and discover the broad spectrum of our ELAFLEX solutions for your petrol stations.



FROM THE FUEL DISPENSER TO THE CUSTOMER – ZVA AND SLIMLINE

ELAFLEX revolutionised self-fuelling and made it much easier for your customers already decades ago. At the beginning of the 1960s, we launched the innovative ZVA (fuel dispenser nozzle, automatic shut-off) into the market, making it easy to refuel to the penny. With the 'Slimline' design at the early 1970s, the shape of the petrol nozzle followed the hands of your customers.

Since the end of the 1980s, we have been using vapour recovery (GR) to ensure a better climate at the fuel dispenser. Today, ZVA 2 and Slimline 2 set industry standards for petrol and diesel nozzles throughout Europe. It just could not be simpler, safer or more durable, as demonstrated by the unique investment/lifetime ratio (TCO), rapid availability from stock and practice-orientated ease of repair and maintenance.

Petrol & Diesel



ZVA SLIMLINE

Catalogue page 523



Automatic nozzle DN 19
Max. flowrate 60 l/min.
For solvents, chemicals, foodstuffs.
Body of gunmetal or bronze.
Pressure 0,5 to 4 bar.

ZVA SLIMLINE 2

Catalogue page 517



Automatic nozzle for flowrate up to 80 l/min.
Suitable for gasoline, also with ethanol content, diesel, fuel oil and biodiesel.
Working pressure 0,5 – 3,5 bar.

ZVA SLIMLINE GR

Catalogue page 513



Automatic nozzle for active vapour recovery. Suitable for all standard gasoline fuels (also with ethanol content), up to 45 l/min. Design 'GRV' with integrated vapor valve 'On/Off', Design 'GRVP' with vapour proportional valve. Working pressure 0,5 – 3,5 bar.

SIGHT GLASSES

Catalogue page 515



Sight glasses type SG (with BSP thread EN ISO 228). Type TSG (one side with tank truck flange). Brass also chrome plated, or aluminium.

ZVA 25

Catalogue page 525



Automatic nozzle for flowrate up to 140 l/min, DN 25. Suitable for gasoline, diesel and fuel oil.
Working pressure 0, 5 – 3, 5 bar.

ZVA 32

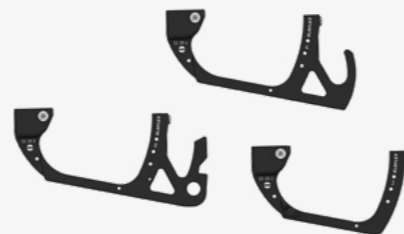
Catalogue page 529



Automatic nozzle for flowrate up to 200 l/min, DN 32. Suitable for diesel, light fuel oil, petroleum, AVGAS and Jet fuels. Working pressure 1,5 – 6 bar.

GUARDS

Catalogue page 513



Guard with block magnet 'M' or round magnet 'rm' for Reed contacts. With pressure-controlled safety shut-off DSA for prepay/preset dispensers.

SAFETY BREAKS

Catalogue page 533a-533d



Self-closing safety break couplings for nozzles, reusable. To protect dispensers, hose assemblies and cars in case of drive-off incidents.

SLIMLINE

Catalogue page 111a

Quality petrol pump hoses for gasoline, diesel fuels and biodiesel or ethanol content. Cold flexible down to -30°C (LT-type down to -40°C). Assembly with ferrule type couplings.



ACCESSORIES

Basic colors & a wide range of other colors.



TANK AND FITTINGS FOR ALL KIND OF LIQUIDS AND GASES

The supply of stationary consumers with conventional/alternative fuels or other sensitive, potentially flammable and explosive media by tank trucks requires equipment that meets the highest material and manufacturing quality standards. For decades, ELAFLEX has been providing a portfolio of sophisticated products for these demanding conditions, which have been developed for practicality, durability and ease of use, but which also complement each other perfectly.

Since the 1950s and 1960s, ELAFLEX has actively contributed to achieving cross-industry standardisation of tank trucks couplings in order to permanently increase the effectiveness and safety of deliveries to filling stations and other customers.

The ELAFLEX Group's expertise in the development and manufacture of dry disconnect couplings worldwide ensures that risks to health and the environment are considerably reduced and at the same time loading/unloading times are significantly accelerated. We assemble tank truck hose lines for a wide variety of purposes and media according to our customers' requirements directly in the factory, test them in accordance with the strictest standards and deliver them immediately.

TANK TRUCK



TW COUPLINGS

Catalogue page 513



Nozzle with automatic shut-off and safety cut out ball valve, check valve, 3-speed lever latch with removable latch pin EB 280, and strainer EK 172. Available either with fixed hose inlet 'F', swivel EA 075.0 A or Safety Swivel Break SSB 16 SS of stainless steel: Body of aluminium nickel plated and transparent plastic coated, spout aluminium, with magnetic switch, inner parts stainless steel/plastic. Hose inlet of stainless steel. Lever rilsan plated (blue), scuffguard black or blue and comfigrip PVC, seals NBR/PU. Spout with magnet opening.

DDC-DRY DISCONNECT COUPLINGS

Catalogue page 345



Nozzle with automatic shut-off, check valve, 1-speed lever latch with removable latch pin EB 280. Body aluminium, chemically nickel-plated and plastic-coated. Spout fiber-reinforced composite plastic with integrated misfilling protection, no dripping when removing nozzle from fill point. Inner parts stainless steel and POM, strainer PA. Lever and guard PA. Scuffguard and comfigrip PVC, seals NBR and PU. Includes EW 22 test adapter.

TW DUST CAPS

Catalogue page 311



Guard with block magnet 'M' or round magnet 'rm' for Reed contacts. With pressure-controlled safety shut-off DSA for prepay/preset dispensers.

COMPOSITE HOSES

Catalogue page 183



Type FWS (PP, PTFE, PA, VR), flexible general purpose hose for most common chemicals. Temperature range -30 °C to +100 °C. Max. W.P. 14 bar.

HOSES

Catalogue page 103ff



Universal tank hoses for almost all liquid and pasty chemical and petroleum based products and solvents in diameters 13 – 200 mm.

ERV-R & ERV-G

Catalogue page 407, 423



RED BAND expansion joint for different kinds of water, chemicals, acids and alkalis, salt solutions, alcohols. YELLOW BAND expansion joint for petroleum based products, cooling water emulsions with corrosion preventing oil.

SAFE AND ERROR-FREE ADBLUE® REFUELLING

The 32 % urea solution AUS 32 with the brand name AdBlue® allows an uncomplicated and reliable reduction of nitrogen in diesel exhaust gases of up to 97 %. However, the filling of the vehicle by the consumer must be carried out safely and error-free in order to avoid massive damage of diesel engines.

ELAFLEX addressed the AdBlue® challenge at a very early stage and developed innovative refuelling systems suitable for everyday use with proven quality, durability and operating safety. Your customers can refill synthetic urea with the well-known and intuitive ZVA nozzles without the risk of misfuelling. All materials have been designed for the special requirements of urea solutions and ensure that you can establish a reliable AdBlue® value chain. The nozzle ZVA ADBLUE HV is made for use with the standard-compliant ELAFIX 40 solenoid adapter. Due to its reliability, it prevents misfuelling and cost-intensive consequences even under unfavourable conditions. With the nozzle ZVA ADBLUE LV, ELAFLEX covers your customers' vehicles that are equipped with a filler neck in accordance with ISO 2241-5.

As you would expect from ELAFLEX, high-quality and durable accessories such as various bracket shapes, matching breakaway couplings, product pallets or scuff guards are also available for the AdBlue® products – and can be easily put together using our online configurators.

ADBLUE



ELAFIX 40

Catalogue page 521a



The blue 'ELAFIX 40' magnet adapter which is fitted to the AdBlue® tank filler neck. It provides the magnetic field.

ZVA ADBLUE HV

Catalogue page 521a



Nozzle with automatic shut-off and safety cut out ball valve, check valve, 3-speed lever latch with removable latch pin EB 280, and strainer EK 172. Available either with fixed hose inlet 'F', swivel EA 075.0 A or Safety Swivel Break SSB 16 SS of stainless steel: Body of aluminium nickel plated and transparent plastic coated, spout aluminium, with magnetic switch, inner parts stainless steel/plastic. Hose inlet of stainless steel. Lever rilsan plated (blue), scuffguard black or blue and comfigrip PVC, seals NBR/PU. Spout with magnet opening.

ZVA ADBLUE LV

Catalogue page 521c



Nozzle with automatic shut-off, check valve, 1-speed lever latch with removable latch pin EB 280. Body aluminium, chemically nickel-plated and plastic-coated. Spout fiber-reinforced composite plastic with integrated misfilling protection, no dripping when removing nozzle from fill point. Inner parts stainless steel and POM, strainer PA. Lever and guard PA. Scuffguard and comfigrip PVC, seals NBR and PU. Includes EW 22 test adapter.

GUARDS

Catalogue page 513



Guard with block magnet 'M' or round magnet 'rm' for Reed contacts. With pressure-controlled safety shut-off DSA for prepay / preset dispensers.

SAFETY BREAK

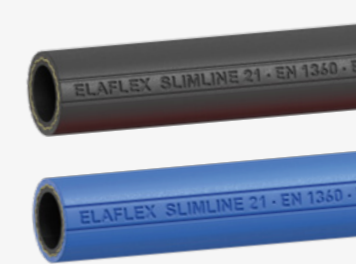
Catalogue page 533b



Reusable, self-closing Safety Swivel Break for ZVA AdBlue LV or ZVA AdBlue HV to EN 13617-2. Suitable for AdBlue® to EN ISO 22241-1. Flow rates up to 40 l/min. Body and swivel nut of stainless steel, inner parts Adblue® resistant plastics, seals of FKM and NBR. Includes Break Sleeve BS 16.

SLIMLINE

Catalogue page 113



Highly flexible and allows small bending radii for a comfortable and effortless dispensing in space-confined environments. Suitable for MPD retractions systems. Combined with appropriate stainless steel hose couplings, the plasticizer-free and leaching resistant lining of Slimline 16 AdBlue® guarantees constant purity of the dispensed urea solution.

ACCESSORIES

Catalogue page 521b, 521d



Accessoires like product badges, colour sleeves, break sleeves, splashguards and scuffguards in blue and black.

WINDSCREEN WASHER FLUID & H₂O FOR CONVENIENT REFILLING

Offer your own dispensing points and taps for windscreen washer fluid and H₂O, if you want to extend your service advantages to your customers – and truck drivers in particular. They will immensely and immediately appreciate the easy refilling of their windscreen washer system thus eliminating the inconvenience of handling bulky and dripping watering cans.

The supply of H₂O for special purposes with the proven and precise ELAFLEX dispensing valve technology significantly improves and shortens work processes, and not just in garages. Durability, an excellent investment/lifetime ratio (TCO), the maintenance-friendly design and rapid availability ensure that your commitment to customer service is quickly amortised.

For dispensing windscreen washer fluid, ELAFLEX has developed a suitable non-automatic closing ZV SW nozzle. It combines long service life with a high-quality look and easy handling comparable to conventional vehicle refuelling, even in cold ambient temperatures.

The ZVA H₂O nozzle is used to inject demineralized water for gasoline vehicles in compliance with ISO 31120-1 and the Euro 7 emissions standard. It has an automatic shut-off function and integrated misfilling prevention for petrol and diesel filler necks. The nozzle reliably protects against fluid contamination.



H₂O, SW

ZV H₂O

Catalogue page 517



The ZVA H₂O nozzle is used to inject demineralized water for gasoline vehicles in compliance with ISO 31120-1 and the Euro 7 emissions standard. It has an automatic shut-off function and integrated misfuelling prevention for petrol and diesel filler necks. The nozzle reliably protects against fluid contamination.

ZV SW

ELAFLEX Information 1.23



The non-automatic closing nozzle is easy to handle and comparable to conventional vehicle refueling nozzle. It allows a clean and fast filling of screen water, even in cold ambient temperatures.

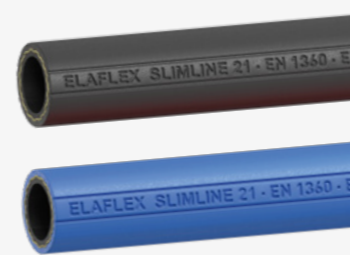
GUARDS



Guard with block magnet 'M' or round magnet 'rm' for Reed contacts. With pressure-controlled safety shut-off DSA for prepay / preset dispensers.

SLIMLINE

Catalogue page 111a



Slimline Hoses are highly flexible and allow small bending radii for a comfortable and effortless dispensing in space-confined environments. The hoses are suitable for MPD retractions systems.

ACCESSORIES

Catalogue page 512, 515



Fitting accessories like product badges, colour sleeves, break sleeves, splash-guards and scuffguards.

ELAFLEX QUALITY FOR LPG REFUELLING

You can offer your customers all the usual ELAFLEX benefits whether you supply LPG via an ACME, DISH or EURO connection: simple operation, high operational reliability and low weight.

As a forward-thinking petrol station operator, you also profit from the renowned ELAFLEX durability, a durable, modular design, low expansion volume when uncoupling and fast availability. As experience shows, ELAFLEX repair partners rarely get to see our products – but when they do, they always appreciate the outstanding material quality and service-friendly design. Our LPG dispensing system includes the ergonomic ZVG 2 nozzle in ACME, DISH or EURO versions, the highly flexible, polymer-free LPG 16 hose (can be configured as an LPG hose line with matching LPG fittings on request) and the optional ARK 19 Mod. 2 breakaway coupling (can be reassembled without tools after a drive-away accident).

COUPLING TYPE

Catalogue page 561



ACME 1 1/4" Threaded Coupling (EN 12806)
 DISH "Italian" Claw Coupling (EN 12806)
 EURO Push-In-Coupling (EN 13760)
 EURO UL Push-In-Coupling (EN 13760)
 K Push-In-Coupling (ISO 19825)

CONNECTORS & NOZZLE BOOT

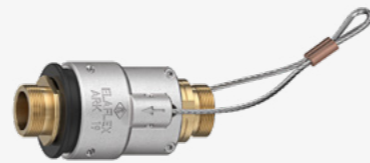
Catalogue page 116



The complete kit for LPG dispensers incl. connectors, nozzle boots for all coupling types.

SAFETY BREAK COUPLING ARK 19 MOD. 2

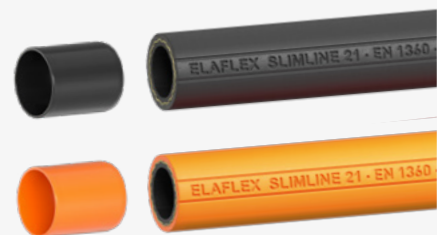
Catalogue page 563



ARK 19 Mod. 2 Safety Break for LPG hoses. Safe and functional – easy reconnection after drive-off incidents, without the need to purge the system. This must only be done by a suitably trained person.

COLOUR SLEEVE & LPG HOSES

Catalogue page 116



Meet EN 1762 standard. For propane, butane and their mixtures. Highly flexible and long-lasting construction. Burst pressure >100 bar. Temperature range LPG 16 S -30 °C up to +70 °C, LPG 16 -40 °C up to +70 °C. DVGW and AS 1869 approved.

SCUFFGUARD WITH NOZZLETALKER

Catalogue page 561, 573, ELAFLEX Inform. 4.17



Scuffguards for ACME, DISH or EURO in black or orange incl. nozzle talkers with fuel grade identification and a large printing/advertising space.

SPLASHGUARD

Catalogue page 571



Protects the customer's hand against any gases release after nozzle valve has shut down.

ERV-OR

Catalogue page 439



ORANGE BAND expansion joint for Liquid Petroleum Gas (LPG) according to EN 589. Temperature range -20 °C up to +90 °C.

LPG



THE ELAFLEX CNG DISPENSING SYSTEM

The fuel alternative CNG (Compressed Natural Gas, also with biogas components if required) promises to reduce global CO₂ emissions in a less complicated way. As a petrol station operator you can now enjoy all the usual ELAFLEX benefits – fast delivery from our warehouse, customer-friendly operation and uncompromising safety – for your existing and new CNG refuelling customers. We offer you durable all-in-one refuelling hardware for CNG dispensers, which ensure the best flow rates and maximum safety under pressure for a wide range of conditions. Our nozzle N-CNG is designed and type approved by DNV according to NGV1 and ISO 14469. It is available as N-CNG P30 for rated service pressures up to 207 bar/3.000 psi (EU standard) and as N-CNG P36 up to 250 bar/3.600 psi (US standard). The robust and durable nozzles are complemented by useful accessories such as the EA 957 scuffguard in different colours and nozzle talkers (EK 024 CNG), which were developed and manufactured specifically for the challenging petrol station operation. You already know and appreciate our proven refuelling products. You can also rely on ELAFLEX for CNG.

CNG



SB CNG

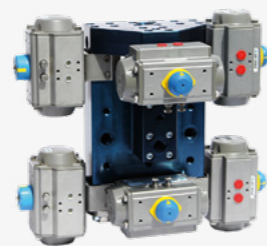
Catalogue page 581c



Reusable breakaway coupling 'SB-CNG' protects CNG dispensers from drive-away incidents by separating and isolating the hose assemblies. Light weight design with soft bump stop protects dispenser panels from damage in case of a breakaway event. Easily reconnectable after a breakaway event. For use on CNG dispensers with Fill and Vent Line (twin-hose), each to be installed as inline breakaway between two hose assemblies ('hose break').

PRIORITY PANEL

Oasis Information CNG Manifolds



Manifold designs for high flow gas applications, ideally suited to minimizing potential leak points and installation time. Suitable for use in CNG service stations, compression plants and dispensers.

Custom made Priority Panels on request.

BALL VALVES

Oasis Information CNG Ball Valves



Full flow stainless steel manual ball valves for fluid control and pipework isolation. Mainly used in CNG applications like compressors, dispensers, priority panels, isolation valves and gas storage. Sizes from 1/4" to 1".

CYLINDER VALVES

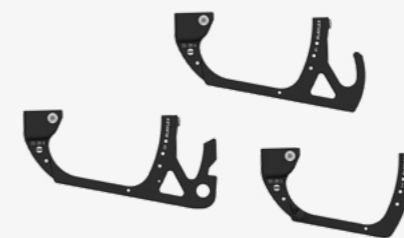
Oasis Information CNG Cylinder Valves



Quarter turn manual cylinder ball valve designed for fast load/unload of gas cylinders. Mainly used in CNG applications where time and safety are critical factors. Full flow 1/2" for cylinder threads 1 1/8-12 UNF. Other options on request.

GUARD

Catalogue page 518b



Guards with or without different magnets, with or without Hold-Open Latch.

ACCESSORIES

Catalogue page 581a



Available designs see ek024selector.elaflex.de/en. Individual designs available.

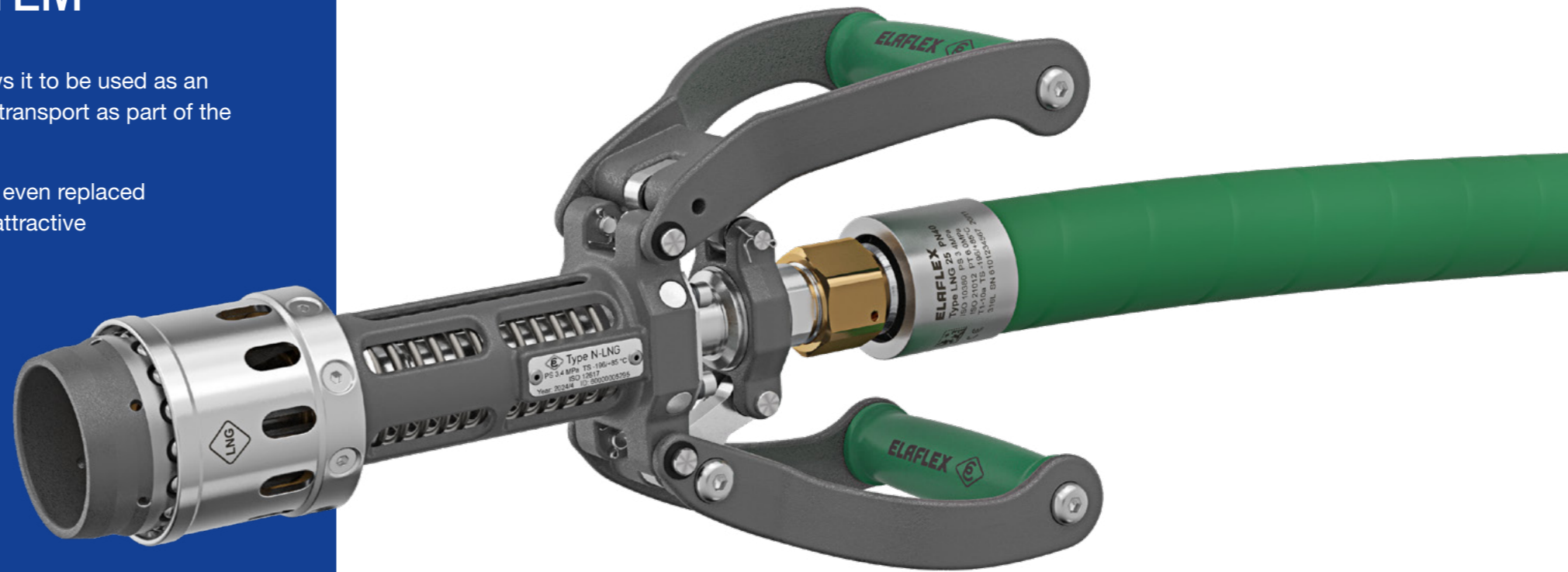
THE ELAFLEX LNG REFUELLING SYSTEM

The liquefaction of natural gas reduces the volume to one six-hundredth and allows it to be used as an economical and more environmental friendly alternative to diesel for heavy goods transport as part of the energy transition.

LNG can be blended very effectively with components from biogenic sources – or even replaced completely. Thanks to this property, this energy source qualifies as a flexible and attractive bridging technology in the long term. Accordingly, more and more oil companies are offering LNG for commercial and heavy goods vehicles such as lorries and buses.

Petrol station operators need reliable, user-friendly and highly safe equipment to supplement their fuel portfolio with liquefied natural gas. The highest demands on operating safety and material quality set the bar very high in this area – the ELAFLEX Group can make full use of its well-known expertise – consistent orientation of function and design towards the end user, uncompromising manufacturing and material quality, the strictest and potentially industry-defining safety standards, guaranteed by fast and direct availability.

In addition to our cryogenic couplings, e.g. for the bunker service of ships, we offer the ELAFLEX LNG refuelling system for use at filling stations, consisting of precisely matched filling components such as the vent coupling VC-LNG, the safety break SB-LNG VL and LNG hose lines in different variants. These ensure that direct contact between the operator and cold surfaces is reliably avoided.



LNG

DCC-DRY CRYOGENIC COUPLINGS & VC-LNG

Catalogue page 579a



Hose unit with swivel for temporary connection between storage tank and mobile transport units, e.g. for container discharge, fuel bunkering, loading/unloading of tank trucks, rail tankers and ships.

SB-LNG VL

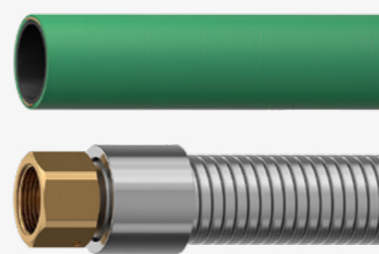
Catalogue page 579c



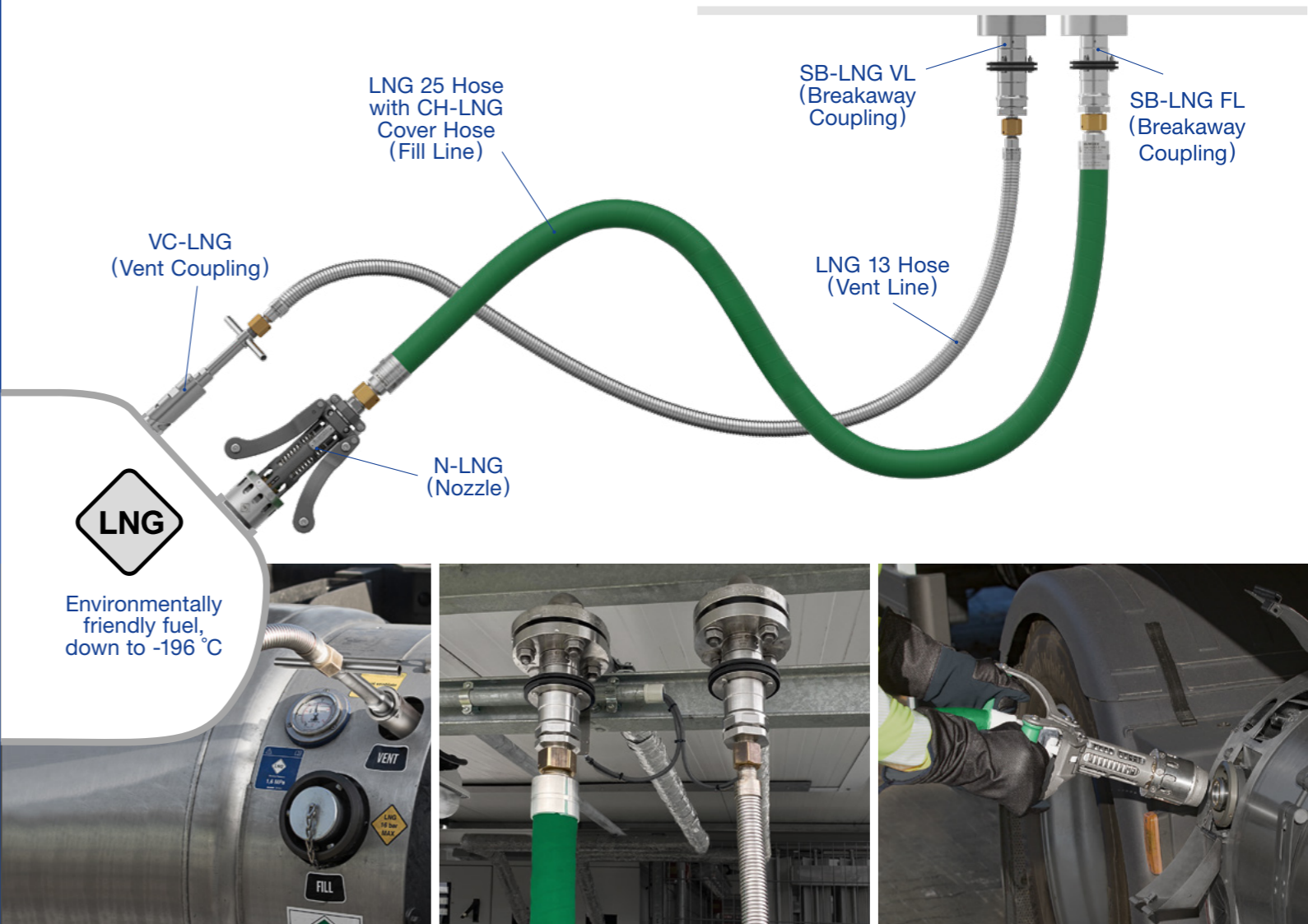
Protects LNG dispensers from drive-away incidents by separating and isolating dispenser from Fill or Vent Line. Stops the flow of fuel on both ends at separation. Reconnectable after breakaway event by replacing breaking bolts EB 544-3. For installation on LNG dispensers.

HOSES

Catalogue page 579d



For venting or refueling of heavy vehicles (trucks) with LNG. Suitable for installation with nozzle, vent coupling or safety break on LNG dispensers. For use with LNG (or liquid nitrogen for calibration purposes) with a low media temperature down to -196 °C.



Environmentally friendly fuel, down to -196 °C

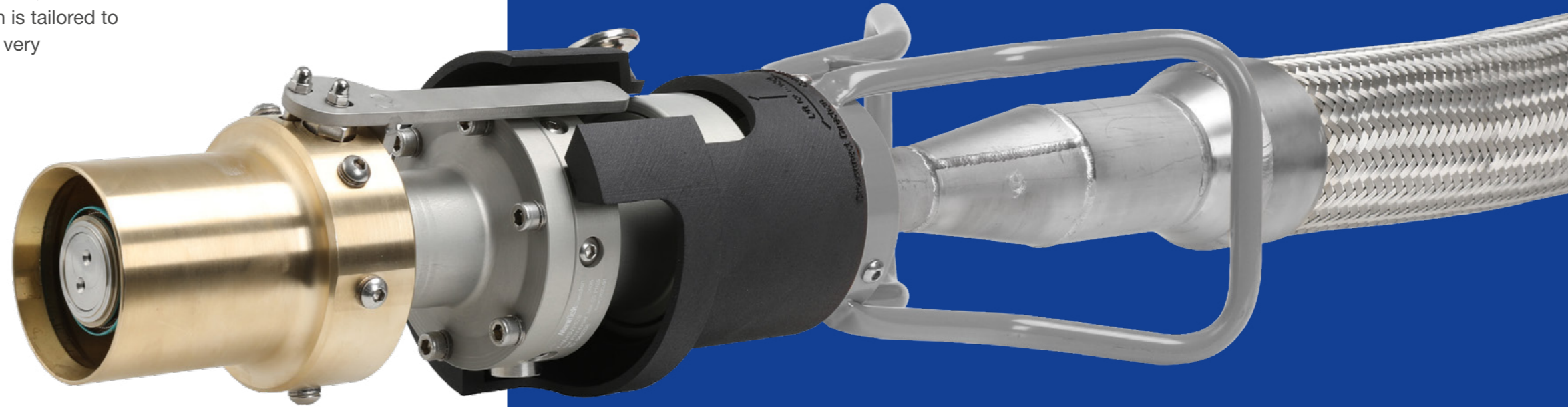
HYDROGEN EQUIPMENT

Only few alternative fuels currently open up as many possibilities for overcoming the challenges of the energy transition as hydrogen. Especially in combination with a far-sighted and flexible virtual pipelining strategy.

In its liquefied form as LH2, H2 puts enormous demands on materials, handling and safety. ELAFLEX can fully utilise all of its expertise in this area: uncompromising safety standards, the highest material quality and consistent alignment of function and design with the expectations and background knowledge of the end user.

It is also very important to us that operators do not come into contact with cold surfaces at any time. If you want to position yourself in the demanding LH2 market, ELAFLEX is the right choice. The ELAFLEX Group's equipment, which is tailored to the specific requirements of liquefied hydrogen, covers a very wide range of applications.

The newly developed and extensively tested N-LH2 dispensing valve is used to supply vehicles directly with cryogenic LH2. In combination with H2 hose lines, distributors, ball valves and breakaway couplings from ELAFLEX, you have a complete solution at your disposal that sets industry standards with its consistent focus on the needs of the market.



HYDROGEN

The CCS (Carbon Capture and Storage) process makes it possible to extract much needed hydrogen from natural gas without having to accept the climate-damaging effects of the released CO₂. The freed carbon dioxide is directly injected and prepared for long-term underground storage. CCS plants have correspondingly high safety and tightness requirements, which are reliably met by ELAFLEX special equipment.

Hydrogen-compatible rubber expansion joints from ELAFLEX ensure that pipeline transitions and pump systems in the H2 cycle can fulfil their function and transport hydrogen without vibration or contamination.

Virtual pipelining connects hydrogen production and consumption locations without having to provide investment-intensive resources such as physical pipeline networks. The concept is based on sophisticated and intuitive components that make no compromises in terms of safety and pressure resistance.

ELAFLEX has been focussing on this future-oriented concept from the very beginning and takes it into account in all innovation and development activities that help to exploit the potential of alternative fuels.

H2 ACCESSORIES

Oasis Information Hydrogen



Ball and check valves as well as quick couplers up to 1" available. Used for distribution, virtual pipelines to load or unload hydrogen trailers. Allows much higher flow rates than conventional H2 refuelling components. Suitable for operating pressure of 350 bar (35 MPa).

H2 HOSES

ELAFLEX Information 9.22



H2 hydrogen hoses for low-pressure range, Ω /T connection hoses for the transfer up to 100% hydrogen. Continuous smooth inner lining. Robust hose construction with 20 bar (2 MPa) operating pressure with a very low permeation of < 0.36 Ncm³/h. H2 hoses DN 13-50 available with crimping ferrules, Spannloc or Spannfix clamps.

ERV-H2+

ELAFLEX Information 9.22



Suitable transfer of up to 100% hydrogen as well as for 100% methane or other mixtures ('Hythane'). Due to their low permeation, they can be used for any kind of piping systems in the industrial sector and for ships. operating pressure 25 bar (2,5 MPa).



COILED, CLEAN & TIDY

The ELAFLEX philosophy involves always looking at the big picture and thinking in cross-product solution contexts. Accordingly, we also offer suitable hose reels manufactured to customer specifications for our hose lines used all over the world.

They are equipped with various return mechanisms – manual, return spring, electric, hydraulic or pneumatic. ELAFLEX hose reels are produced to the highest quality standards and naturally comply with European health, safety and environmental standards. The materials are selected to match the application: Steel with polyester powder coating, aluminium or stainless steel for demanding operating conditions. The colour can also be freely selected.

MANUAL REWIND

ELAFLEX Information 7.21E



Hose reel with handle. Also available with chain transmission for bigger sizes.

SPRING REWIND

ELAFLEX Information 7.21E



Hose reel with automatic spring-loaded rewind system. Suitable for retraction of hoses up to 25 m in DN 50 mm.

ELECTRIC REWIND

ELAFLEX Information 7.21E



Hose reel with electric motor. Electric motors available: AC = 230/400 V DC = 12 V/24 V Optionally with ATEX certified motors.

HYDRAULIC REWIND

ELAFLEX Information 7.21E



Hose reel with hydraulic motor. The motor is always provided with levers to operate.

PNEUMATIC REWIND

ELAFLEX Information 7.21E



Hose reel with pneumatic motor. Optionally available with 'ON/OFF' kit to operate the hose reel.

BONDING REEL

ELAFLEX Information 7.21E



Reel with spring rewind mechanism. Frame available in polyester powder coated steel, UV resistant or stainless steel and any colour. High visibility grounding cable, up to 30m, DN 6mm and different types of clamps.

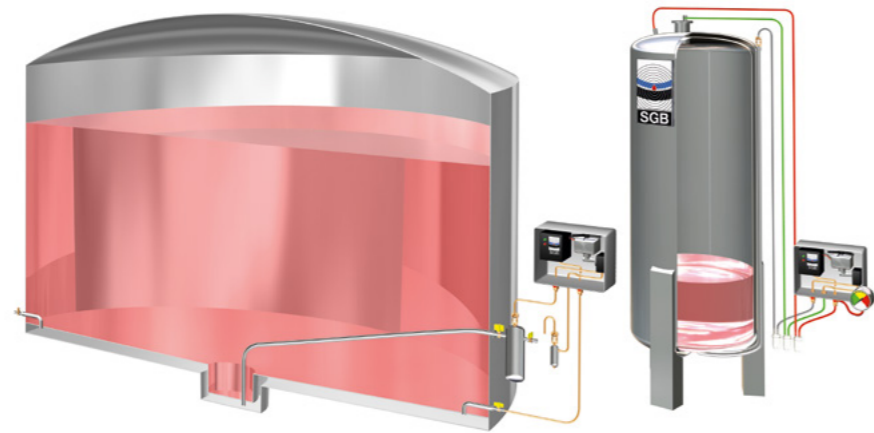
HOSEREEL



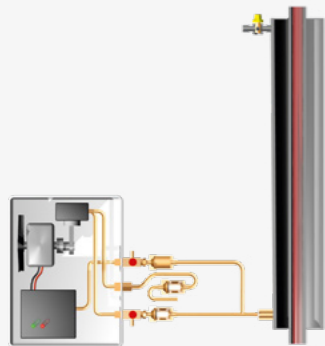
SGB TECHNOLOGY – KEEPING EVERYTHING UNDER CONTROL

Safe leakage monitoring and prevention that works under all environmental and weather conditions is a fundamental part of a petrol station's environmental management concept. If the protection of people and the environment is clearly a legal priority, the prevention of soil and groundwater damage naturally also goes hand in hand with the avoidance of investment-sensitive losses of the stored fuels.

These requirements must be clearly and reliably covered – the selection, acquisition and installation of the necessary technology present those responsible with tasks that should not be underestimated. We have already done this preparatory work and, in SGB GmbH, we have a proven and experienced specialist in the ELAFLEX Group who has developed innovative, tried-and-tested and exceptionally robust solutions for different tank systems and geographical specifications.



MONITORING HIGH FEED AND OVERPRESSURES



SGB leak detectors realize highest environmental protection according to EN 13160 (class I) for double-walled pipes: Both inner and outer wall are monitored 100% continuously and reliably for leaks. Loss of the conveyed product is excluded due to the pneumatic monitoring principle.

VACUUM LEAK DETECTOR



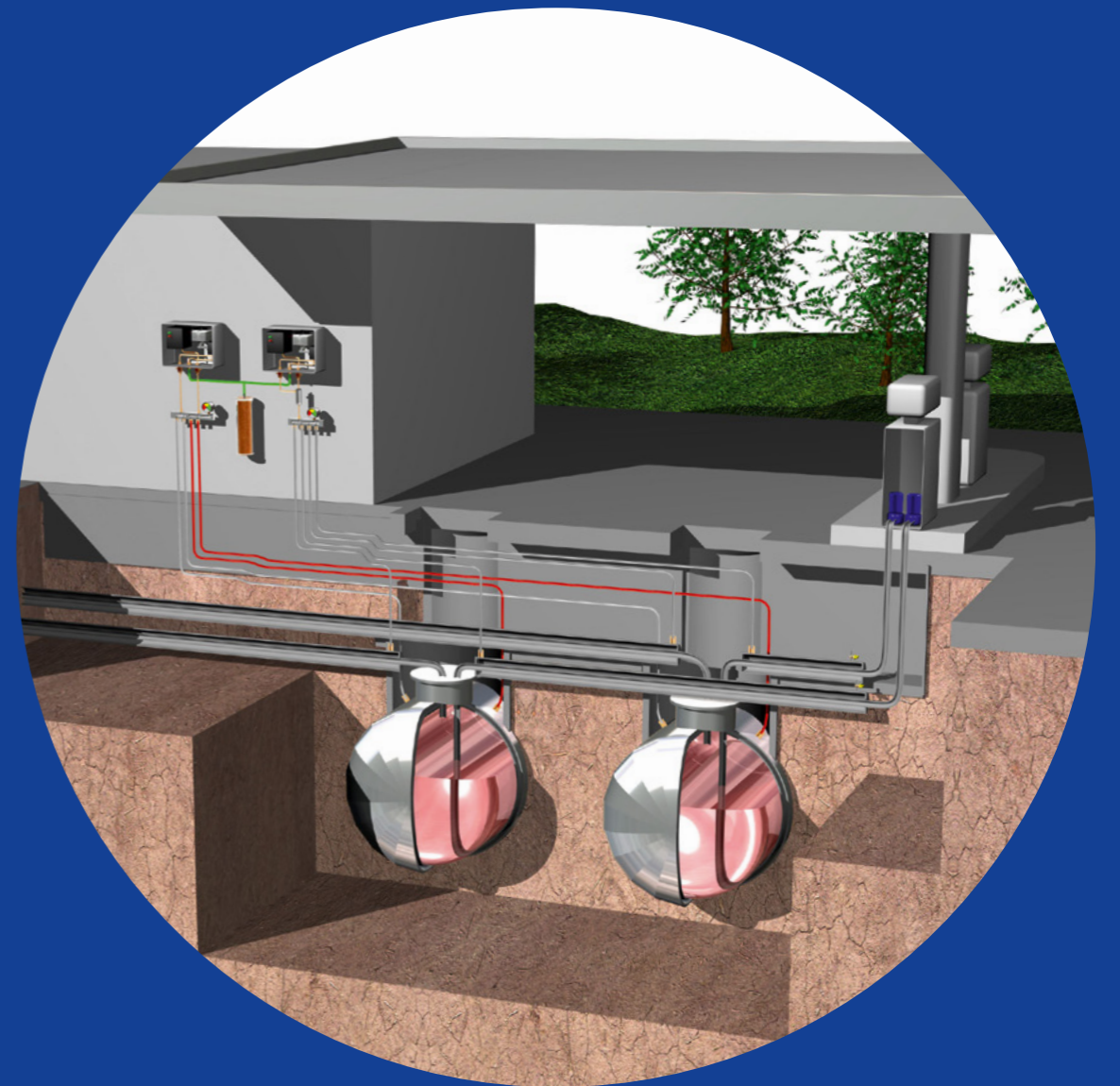
Vacuum leak detector **VLXE 330 Ex M** is used for monitoring double-walled tanks and pipe systems. EN 13160 class I requirements. suitable for installation in Ex-zone I or II, equipped with an integrated pump, integrated heating, a digital manometer, and detonation flame arresters.

LEAK DETECTION UNIT



LDU22 for tanks and pipes at filling stations based on positive air pressure. The standard version is equipped with a green operating light, a red alarm light, a flashing signal lamp on the top of the housing and an acoustic signal and acknowledgement button.

LEAK PREVENTION





THE ELAFLEX GROUP



Contact data of our approximately 150 distribution partners worldwide:
elaflex.de/en/contact/distribution-partners

ELAFLEX WORLDWIDE

Air Traffic Trade AB Sweden	Måttbandsvägen 12 18766 Täby Tel. +46 8-768 39 90 info@airtt.se airtt.se	ELAFLEX FRANCE SARL France	Aktipark 50 Rue des Chardonnerets, Lot N° 3 93290 Tremblay en France Tel. +33 1 41 84 06 22 info@elaflex.fr elaflex.fr	ELAFLEX Yakıt İletim Ürünleri Ltd. Şti. Turkey	42 Maslak Plaza Ahi Evran Street No:6 34485 Maslak - Sarıyer İstanbul, Turkey Tel. +90 212 974 1020 batuhan.kiroglu@elaflex.com elaflex.com.tr
Aljac Fuelling Components Ltd. Germany	c/o ELAFLEX HIBY GmbH & Co. KG Schnackenburgallee 121 22525 Hamburg Tel. +49 40 6908 4116 info@aljac.de aljac.de	ELAFLEX ITALIA SRL Italy	Via Industriale 28 25086 Rezzato (BS) Tel. +39 030 249 61 00 info@elaflex.it elaflex.it	Mann Teknik AB Sweden	Strandvägen 16 54231 Mariestad Tel. +46 501 39 32 00 sales@manntek.se manntek.se
Aljac Fuelling Components Ltd. Great Britain	Unit 1a, Watchmore Point Camberly, Surrey GU15 3AD Tel. +44 1932 269869 sales@aljac.com aljac.com	ELAFLEX Latin America S.A. Argentina	Av. Dardo Rocha 2524 Piso 1° Martinez (1640) Buenos Aires, Argentina Tel. +54 11 4836-3510 ventas.latinamericah@elaflex.com.ar elaflex.com.ar	Mann Teknik China China	Building C, No 505, 23rd Street, Qian Tang District, Hangzhou Tel. +86 571-87695112 info@manntek.cn manntek.cn
DANTEC LTD Great Britain	Tarran Way, Moreton, Wirral CH46 4TL Tel. +44 151 678 2222 sales@dantec.com dantec.com	ELAFLEX LTD Great Britain	Riverside House Plumpton Road Hoddesdon, Herts EN11 0PA Tel. +44 1992 45 29 50 sales@elaflex.co.uk elaflex.co.uk	MannTek Couplings India Pvt. Ltd. India	Office No. LF7A/7B Lotus Aura, Sama -Savli Road, Vadodara - 390008, Gujarat Tel. +91 9558 825 855
ditec Gruppe Germany	An der Staustufe 6 97318 Kitzingen Tel. +49 9321 2307-0 info@ditec-adam.de ditec-adam.de	ELAFLEX NV Belgium	Merksemsesteenweg 192 2100 Deurne (Antwerp) Tel. +32 3 32 80 420 info@elaflex.be elaflex.be	Oasis Engineering Limited New Zealand	129 Birch Avenue Tauranga, 3110 Tel. +64 7 928 3808 info@oasisngv.com oasisngv.com
ELAFLEX AB Sweden	Måttbandsvägen 12 18766 Täby Tel. +46 8 980 130 info@elaflex.se elaflex.se	ELAFLEX PACIFIC PTY LTD Australia	Unit 29/58 Box Road Taren Point NSW 2229 Tel. +61 2 9525 0945 info@elaflex.com.au elaflex.com.au	SGB GmbH Germany	Hofstraße 10 57076 Siegen Tel. +49 271 48964-0 sgb@sgb.de sgb.de
ELAFLEX HIBY Asia-Pacific Pte. Ltd. Asia/Pacific	Mr. Patrick Velten Office Singapore Tel. +65 9 877 5664 patrick.velten@elaflex.com	ELAFLEX Representation Office China	Mr. Jing Fan Room 1120, 1101 South Pudong Road, 200120 Shanghai, P.R. China Tel. +86 21 505 414 54 fan.jing@elaflex.net.cn elaflex.com		
ELAFLEX BRAZIL Eireli Brazil	Avenida Brigadeiro Luis Antonio, N° 300 8º andar sala 82 Bela vista, São Paulo-SP Brazil - CEP 01318-903 Tel. +55 11 4153-2171 vendas.brasil@elaflex.com.ar elaflex.com.ar	ELAFLEX US Inc. USA	7050 Village Drive, Suite C Buena Park, CA 90621 Tel. +1 888 472 7444 info@elaflexus.com elaflexus.com		



ELAFLEX HIBY GmbH & Co. KG
 Schnackenburgallee 121
 22525 Hamburg | Germany
 Tel. +49 40 540005-0
info@elaflex.de
elaflex.com